



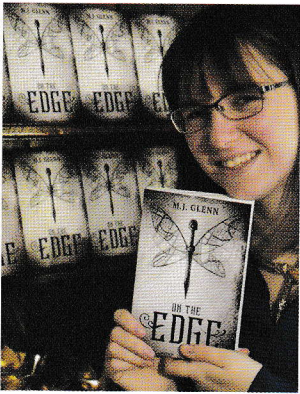
CHRISTCHURCH PACKED LUNCH PROJECT

During lockdown and school holidays, Christchurch Needham Market continues to support the families of children who receive free school dinners.

We supply food that children can help themselves to with no cooking required.

If you live in Needham Market, Barking or Creting St Mary, text Dawn on 07513 122231 to find out more.

NEW AUTHOR IN TOWN



Author Maddy Glenn is celebrating the publication of her first novel, *On the Edge*. Set deep in the heart of Rundlewood Forest, it tells the story of orphaned outlaw Ebony Wick who is recruited into the Bounty Hunters gang and discovers a secret that changes her world.

In a year where books have proved a popular distraction from the gloom surrounding the pandemic, author Maddy Glenn, who has just moved to Needham Market, has taken the initiative to publish her debut novel herself. Since *On the Edge* was published at the end of 2020, Maddy

has been sending orders across the UK and further afield to the Netherlands, Germany, Belgium, Spain, Canada and Australia.

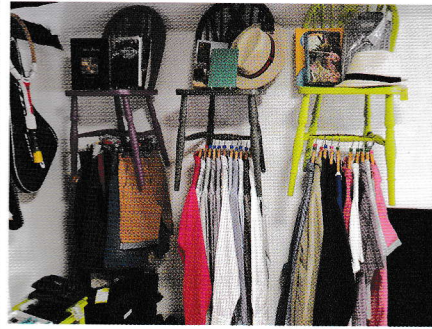
Maddy started her writing journey four years ago, which was when she realised there were only limited options for authors who wanted to publish their own novels. Over time, she decided to start her own business to support writers like herself through the processes of editing, formatting, printing and marketing their own novels. Her business, Softwood Self-Publishing, which she runs from her home in Needham Market with her partner, now works with authors from across the world, including international chess champion and Grandmaster Robert Gwaze, and the award-winning American screenwriter Towanda Kilpatrick. Softwood has also received support from The Princes Trust to run self-publishing workshops for book festivals in Colchester, Guildford, and Appledore in 2021 and Maddy hopes to have set an example to local authors who are seeking to have their manuscripts published.

Maddy says: "Writing has been a therapeutic activity for many people during the recent lockdowns and I've really enjoyed talking to so many authors who are now looking to publish their stories. The self-publishing journey for me has been a really positive experience in an otherwise difficult year. It's so exciting to have my first novel finally out there, and I hope to start writing the sequel later this year."

On the Edge is available as an eBook, from Amazon Kindle, or in paperback, direct from Maddy's own website: www.swspublishing.com/ontheedge

You can follow Maddy's journey on Instagram and Twitter by searching the hashtag #OnTheEdge.

ST ELIZABETH HOSPICE SHOP



How lovely it was to return to the shop in April. I think everyone was pleased to see us open; volunteers were happy to be back and customers were glad we were open for business again. Nuala, our lovely manager, had the shop ship-shape and ready for business so we hit the ground running.

It's been great to be able to accept donations again. Due to our limited storage space, we really appreciate donations coming in a bag or two at a time if possible. There was a time on one of my shifts a few years back when two massive donations came in at the same time and we had to work very quickly to prevent it from becoming a health and safety issue. Smaller quantities are very much appreciated!

The shop is open Tuesdays to Saturdays from 9.30am-4.30pm. As always, we will be very grateful for all good quality goods including clothes, accessories, linens, CDs, DVDs, jigsaws, books, children's toys and bric-a-brac. For more information on donating, please visit the St Elizabeth Hospice website.

Upstairs we have our men's section, which is full of all sorts of things and well worth a visit. In the same room, we have our bric-a-brac, which is always changing and has some lovely items, especially useful if you are looking for a gift. In the other room upstairs we have children's clothes, toys and books in sections including romance, thrillers, historical, science fiction, sport, travel, cookery, gardening, hobbies, nature and miscellaneous.

Thank you for your support during this time; we look forward to seeing you in the shop in June.

Marion Gibbons (volunteer)

CRAFT FAIR AT NEEDHAM MARKET COMMUNITY CENTRE

Sunday 27 June, 10am-4pm

Lots of stalls, refreshments, free parking and free entry

Please support this fair run by Needham Market Community Council

If you would like to have a stall, please contact Marion Gibbons:

mariongibbons@aol.com

01449 720122 / 07787 502712



STOWMARKET & DISTRICT CHAMBER OF COMMERCE

Virtual or face-to-face meetings in June?

We'll have to wait and see but there will be a coffee morning on Friday 4 June from 10am-noon and breakfast on Friday 18 June at a time to be advised depending on how we meet.

Keep an eye on our weekly newsletters for the latest information or visit: www.stowmarketchamber.co.uk

Use the same page to sign up for newsletters and receive all the latest info and booking links.

In Touch online: